

## WANCE: A Wide Area Network Communication Emulation System

Yongguang Zhang  
Bharat Bhargava

Department of Computer Sciences  
Purdue University  
West Lafayette, IN 47906

ygz@cs.purdue.edu  
bb@cs.purdue.edu

## Motivation

- Wide Area Network and Large Scale Distributed System
- Questions that interest us:
  1. What is the communication latency and reliability in WANs?
  2. How does communication performance impact transaction processing (concurrency, atomicity, replication, recovery)? How will the ACID properties change?
  3. How to improve the scalability of the distributed systems?
- Related work  
*C. Pu (Columbia 90), D. Long (UCSC 91), R. Cácceres (USC 91), A. Agrawala (Maryland 92).*

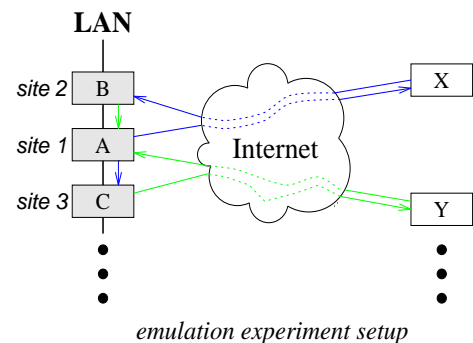
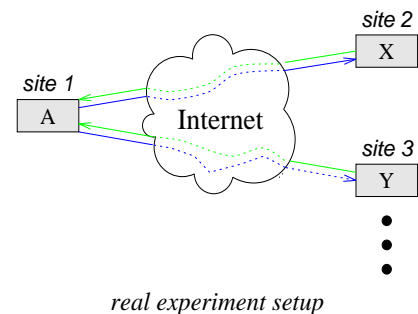
1

## Experimental Infrastructure

- Problem: difficult to obtaining resource at remote sites to conduct experiments.
- Solution: an **emulation** approach – a local host emulates a remote host.
- Pros and Cons:
  - Pro:* excellent geographic scale, easy setup, virtually you can use any host.
  - Con:* limited number of sites, need more work for asymmetric processing.
- WANCE tool – a special communication library for experimenting distributed systems using emulation.

2

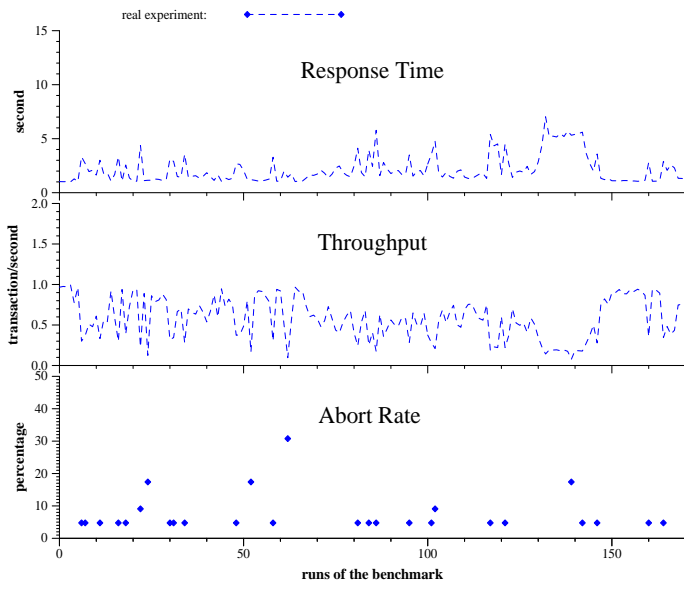
## How Emulation Works



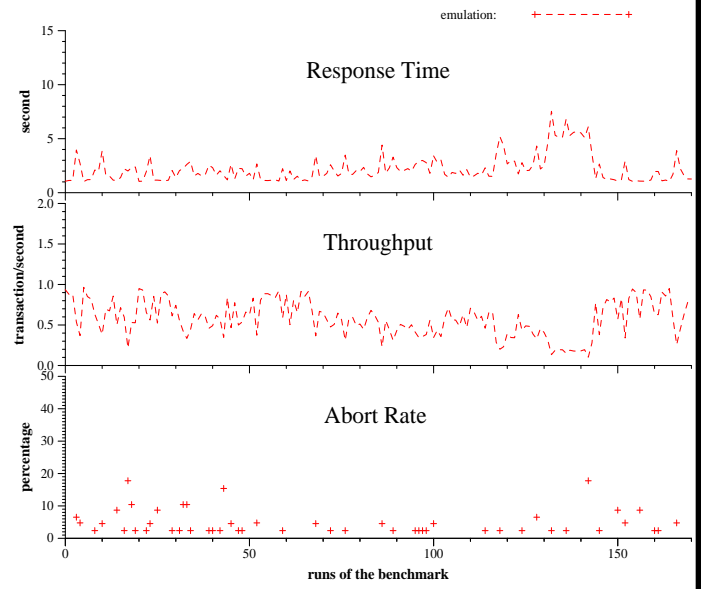
3

# Validation Result (Purdue – Hong Kong)

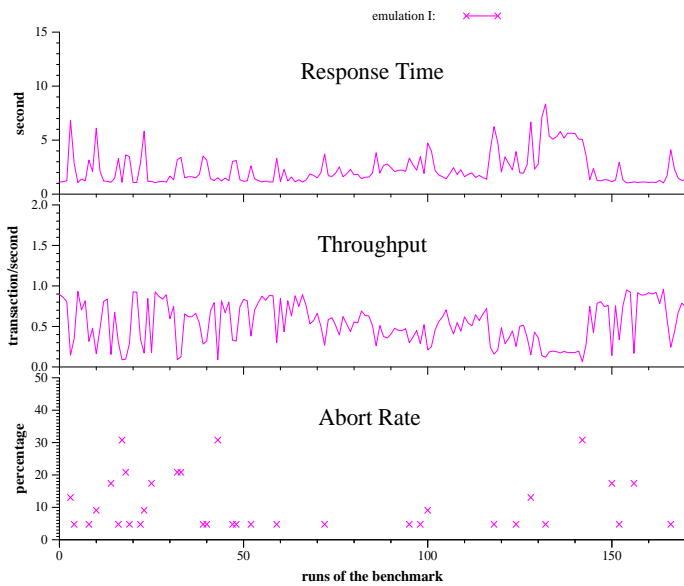
Distributed transaction processing. DebitCredit benchmark.  
Each data point is based on 20 transactions.



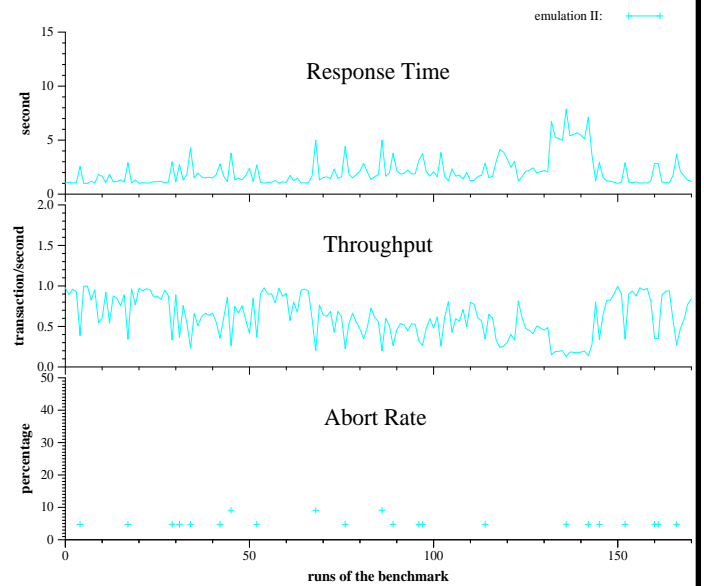
4



4-a



4-b



4-c

## Conclusion

- We can use the WANCE tool to conduct emulation experiments and the results are as valid as in real experiments.
- The emulation experiments can be an inexpensive and accurate replacement for real experiments.

## Reference

1. Bharat Bhargava, Yongguang Zhang, and Enrique Mafla. *Evolution of Communication System for Distributed Transaction Processing in Raid*. Computing Systems (USENIX), Summer, 1991.
2. Yongguang Zhang and Bharat Bhargava. *WANCE: A Wide Area Network Communication Emulation System*. Purdue TR, 1993.
3. Bharat Bhargava and Yongguang Zhang. *A Study of Distributed Transaction Processing in Wide Area Networks*. Purdue TR, 1993.